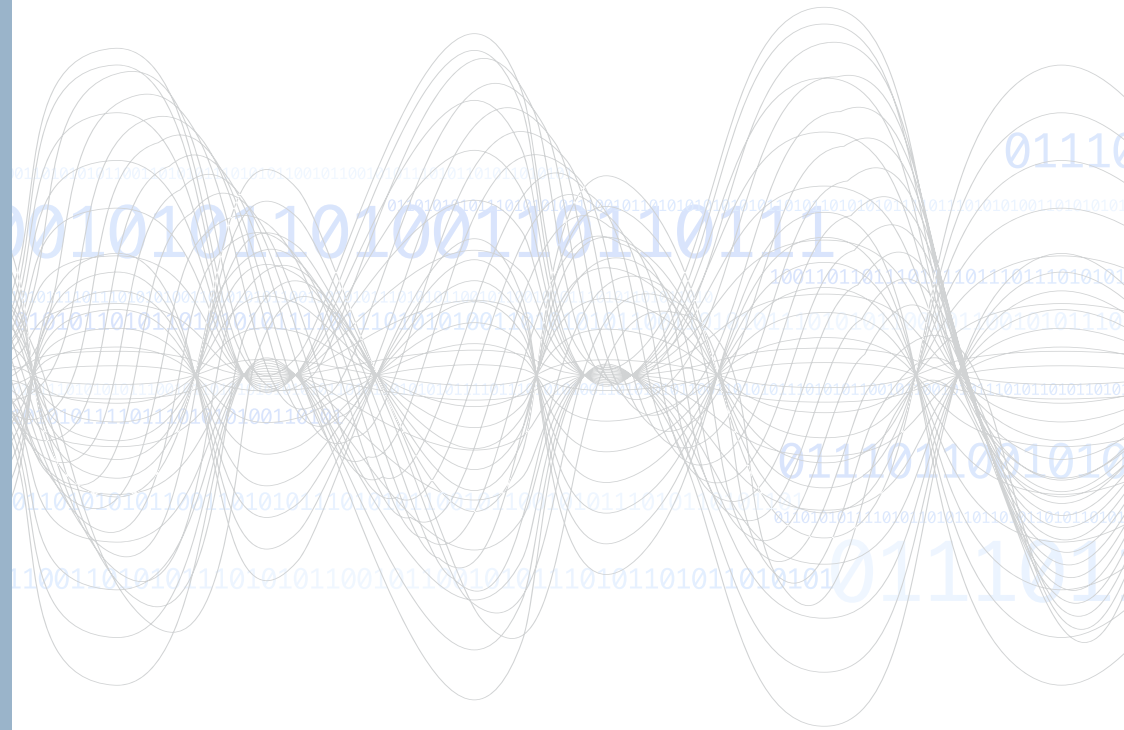




# **YOUR SWITCH SOLUTION SINCE 1945**



**STANDARD PARTS LIST**

## DC-18GHz (SMA) | DC-12.4GHz (N)

	DKM Part Number	Switch Type	Connector Type	Suppression Diodes	Indicators	TTL	Terminations	Life Cycles	Special Options
Failsafe	401-2X08-ROHS	SPDT	SMA	-	-	-	-	1M	-
	401-2X0802A-ROHS	SPDT	SMA	●	-	●	-	1M	-
	401T-2X08-ROHS	SPDT	SMA	-	-	-	-	1M	Extended Temp.
	401T-2X0802A-ROHS	SPDT	SMA	●	-	●	-	1M	Extended Temp.
	401U-2X08-ROHS	SPDT	SMA	-	-	-	-	5M	-
	402P-6X01	SPDT	N	●	-	-	-	1M	Power Connector
	402P-6X0132	SPDT	N	●	●	-	-	1M	Power Connector
	402-2X01-ROHS	SPDT	N	-	-	-	-	1M	-
	402-2X0132-ROHS	SPDT	N	-	●	-	-	1M	-
	402-2X0132A-ROHS	SPDT	N	●	●	●	-	1M	-
	402A-2X01-ROHS	SPDT	N	-	-	-	-	1M	High Power
	402A-2X0132-ROHS	SPDT	N	-	●	-	-	1M	High Power
	521U-2X08-ROHS	SPDT	SMA	-	-	-	-	5M	-
	521U-2X0803-ROHS	SPDT	SMA	-	-	-	2W	5M	-
	521U-2X0803A-ROHS	SPDT	SMA	●	-	●	2W	5M	-
	411C-2X08-ROHS	DPDT	SMA	-	-	-	-	1M	-
	411C-2X0802A-ROHS	DPDT	SMA	●	-	●	-	1M	-
	412P-6X01	DPDT	N	●	-	-	-	1M	Power Connector
	412P-6X0132	DPDT	N	●	●	-	-	1M	Power Connector
	412-2X01-ROHS	DPDT	N	-	-	-	-	1M	-
412-2X0132-ROHS	DPDT	N	-	●	-	-	1M	-	
412-2X0132A-ROHS	DPDT	N	●	●	●	-	1M	-	
Normally Open	441L-5X0803-ROHS	SP4T	SMA	-	-	-	2W	1M	Flange Mount
	461L-5X0803-ROHS	SP6T	SMA	-	-	-	2W	1M	Flange Mount
	541-5X01-ROHS	SP4T	N	-	-	-	-	1M	-
	541-5X0122-ROHS	SP4T	N	-	●	-	-	1M	-
	541-5X0122A-ROHS	SP4T	N	●	●	●	-	1M	-
	545-5X08-ROHS	SP4T	SMA	-	-	-	-	2M	-
	545-5X0802A-ROHS	SP4T	SMA	●	-	●	-	2M	-
	545J-5X08-ROHS	SP4T	SMA	-	-	-	-	2M	-
	545J-5X0802A-ROHS	SP4T	SMA	●	-	●	-	2M	D-Sub Connector
	561-5X01-ROHS	SP6T	N	-	-	-	-	1M	-
	561-5X0122-ROHS	SP6T	N	-	●	-	-	1M	-
	561-5X0122A-ROHS	SP6T	N	●	●	●	-	1M	-
	565-5X08-ROHS	SP6T	SMA	-	-	-	-	2M	-
	565-5X0802A-ROHS	SP6T	SMA	●	-	●	-	2M	-
	565J-5X08-ROHS	SP6T	SMA	-	-	-	-	2M	D-Sub Connector

# ROHS COMPLIANT

[Click here to request a quote.](#)

## DC-18GHz (SMA) | DC-12.4GHz (N)

	DKM Part Number	Switch Type	Connector Type	Suppression Diodes	Indicators	TTL	Terminations	Life Cycles	Special Options
Normally Open	565J-5X0802A-ROHS	SP6T	SMA	●	-	●	-	2M	D-Sub Connector
	565T-5X0802A-ROHS	SP6T	SMA	●	-	●	-	2M	Extended Temp.
	581J-5X08-ROHS	SP8T	SMA	-	-	-	-	1M	D-Sub Connector
	581J-5X0802A-ROHS	SP8T	SMA	●	-	●	-	1M	D-Sub Connector
	581J-5X0803-ROHS	SP8T	SMA	-	-	-	2W	1M	D-Sub Connector
	581J-5X0803A-ROHS	SP8T	SMA	●	-	●	2W	1M	D-Sub Connector
	5A1J-5X08-ROHS	SP10T	SMA	-	-	-	-	1M	D-Sub Connector
	5A1J-5X0802A-ROHS	SP10T	SMA	●	-	●	-	1M	D-Sub Connector
	5A1J-5X0803-ROHS	SP10T	SMA	-	-	-	2W	1M	D-Sub Connector
	5A1J-5X0803A-ROHS	SP10T	SMA	●	-	●	2W	1M	D-Sub Connector
	5C1J-5X08-ROHS	SP12T	SMA	-	-	-	-	1M	D-Sub Connector
	5C1J-5X0802A-ROHS	SP12T	SMA	●	-	●	-	1M	D-Sub Connector
	5E1J-5X08-ROHS	SP14T	SMA	-	-	-	-	1M	D-Sub Connector
	5E1J-5X0802A-ROHS	SP14T	SMA	●	-	●	-	1M	D-Sub Connector
	Latching	401-4X08-ROHS	SPDT	SMA	●	-	-	-	1M
401-4X0832-ROHS		SPDT	SMA	●	●	-	-	1M	-
401-4X0832A-ROHS		SPDT	SMA	●	●	●	-	1M	-
401T-4X08-ROHS		SPDT	SMA	●	-	-	-	1M	Extended Temp.
401T-4X0832A-ROHS		SPDT	SMA	●	●	●	-	1M	Extended Temp.
401U-4X08-ROHS		SPDT	SMA	●	-	-	-	5M	-
402-4X01-ROHS		SPDT	N	●	-	-	-	1M	-
402-4X0132-ROHS		SPDT	N	●	●	-	-	1M	-
402-4X0132A-ROHS		SPDT	N	●	●	●	-	1M	-
402A-4X01-ROHS		SPDT	N	●	-	-	-	1M	High Power
402A-4X0132-ROHS		SPDT	N	●	●	-	-	1M	High Power
521-4X0803-ROHS		SPDT	SMA	●	-	-	2W	1M	-
521-4X0833A-ROHS		SPDT	SMA	●	●	●	2W	1M	-
521U-4X08-ROHS		SPDT	SMA	●	-	-	-	5M	-
521U-4X0803-ROHS		SPDT	SMA	●	-	-	2W	5M	-
411C-4X08-ROHS		DPDT	SMA	●	-	-	-	1M	-
411C-4X0832A-ROHS		DPDT	SMA	●	●	●	-	1M	-
412-4X01-ROHS		DPDT	N	●	-	-	-	1M	-
412-4X0132-ROHS		DPDT	N	●	●	-	-	1M	-
412-4X0132A-ROHS		DPDT	N	●	●	●	-	1M	-
441L-4X0822-ROHS	SP4T	SMA	●	●	-	-	1M	Flange Mount	
441L-4X0822A-ROHS	SP4T	SMA	●	●	●	-	1M	Flange Mount	

X="2" for 12Vdc and X="3" for 28Vdc

# CONTACT US TODAY

[Click here to request a quote.](#)

## DC-18GHz (SMA) | DC-12.4GHz (N)

	DKM Part Number	Switch Type	Connector Type	Suppression Diodes	Indicators	TTL	Terminations	Life Cycles	Special Options
Latching	441L-4X0823-ROHS	SP4T	SMA	●	●	-	2W	1M	Flange Mount
	441L-4X0823A-ROHS	SP4T	SMA	●	●	●	2W	1M	Flange Mount
	461L-4X0822-ROHS	SP6T	SMA	●	●	-	-	1M	Flange Mount
	461L-4X0822A-ROHS	SP6T	SMA	●	●	●	-	1M	Flange Mount
	461L-4X0823-ROHS	SP6T	SMA	●	●	-	2W	1M	Flange Mount
	461L-4X0823A-ROHS	SP6T	SMA	●	●	●	2W	1M	Flange Mount
	581J-4X08-ROHS	SP8T	SMA	●	-	-	-	1M	D-Sub Connector
	581J-4X0822A-ROHS	SP8T	SMA	●	●	●	-	1M	D-Sub Connector
	581J-4X0803-ROHS	SP8T	SMA	●	-	-	2W	1M	D-Sub Connector
	581J-4X0823A-ROHS	SP8T	SMA	●	●	●	2W	1M	D-Sub Connector
	5A1J-4X08-ROHS	SP10T	SMA	●	-	-	-	1M	D-Sub Connector
	5A1J-4X0822A-ROHS	SP10T	SMA	●	●	●	-	1M	D-Sub Connector
	5A1J-4X0803-ROHS	SP10T	SMA	●	-	-	2W	1M	D-Sub Connector
	5A1J-4X0823A-ROHS	SP10T	SMA	●	●	●	2W	1M	D-Sub Connector
	5C1J-4X08-ROHS	SP12T	SMA	●	-	-	-	1M	D-Sub Connector
	5C1J-4X0803-ROHS	SP12T	SMA	●	-	-	2W	1M	D-Sub Connector
	5C1J-4X0853A-ROHS	SP12T	SMA	●	●	●	2W	1M	D-Sub Connector

## DC-40GHz (2.92 mm)

	DKM Part Number	Switch Type	Connector Type	Suppression Diodes	Indicators	TTL	Terminations	Life Cycles	Special Options
Failsafe	401Y-2X11-ROHS	SPDT	2.92 mm	-	-	-	-	1M	-
	401Y-2X1102A-ROHS	SPDT	2.92 mm	●	-	●	-	1M	-
	411CY-2X11-ROHS	DPDT	2.92 mm	-	-	-	-	1M	-
	411CY-2X1102A-ROHS	DPDT	2.92 mm	●	-	●	-	1M	-
N.O.	565Y-5X11-ROHS	SP6T	2.92 mm	-	-	-	-	1M	-
	565Y-5X1102A-ROHS	SP6T	2.92 mm	●	-	●	-	1M	-
Latching	401Y-4X11-ROHS	SPDT	2.92 mm	●	-	-	-	1M	-
	401Y-4X1132A-ROHS	SPDT	2.92 mm	●	●	●	-	1M	-
	521Y-4X1103A-ROHS	SPDT	2.92 mm	●	-	●	1W	1M	-
	411CY-4X11-ROHS	DPDT	2.92 mm	●	-	-	-	1M	-
	411CY-4X1132A-ROHS	DPDT	2.92 mm	●	●	●	-	1M	-
	541JY-4X1123-ROHS	SP4T	2.92 mm	●	●	-	1W	1M	D-Sub Connector
561JY-4X1123-ROHS	SP6T	2.92 mm	●	●	-	1W	1M	D-Sub Connector	

N.O. = Normally Open Actuator

X="2" for 12Vdc and X="3" for 28Vdc

# IN STOCK PARTS LIST

[Click here to request a quote.](#)

## Next Day Shipping\*



Part Number	Switch Type	Frequency	Actuator	Voltage	Connector Type	Suppression Diodes	Indicators	TTL	Life Cycles
401-2208-ROHS	SPDT	DC-18GHz	Failsafe	12VDC	SMA	-	-	-	1M
401-2308-ROHS	SPDT	DC-18GHz	Failsafe	28VDC	SMA	-	-	-	1M
401-220802A-ROHS	SPDT	DC-18GHz	Failsafe	12VDC	SMA	●	-	●	1M
401-230802A-ROHS	SPDT	DC-18GHz	Failsafe	28VDC	SMA	●	-	●	1M
401-420832-ROHS	SPDT	DC-18GHz	Latching	12VDC	SMA	●	●	-	1M
401-420832A-ROHS	SPDT	DC-18GHz	Latching	12VDC	SMA	●	●	●	1M
401Y-2211-ROHS	SPDT	DC-40GHz	Failsafe	12VDC	2.92 mm	-	-	-	1M
402-2201-ROHS	SPDT	DC-12.4GHz	Failsafe	12VDC	N	-	-	-	1M
402-2301-ROHS	SPDT	DC-12.4GHz	Failsafe	28VDC	N	-	-	-	1M
402-220132-ROHS	SPDT	DC-12.4GHz	Failsafe	12VDC	N	-	●	-	1M
402-220132A-ROHS	SPDT	DC-12.4GHz	Failsafe	12VDC	N	●	●	●	1M
402-420132-ROHS	SPDT	DC-12.4GHz	Latching	12VDC	N	●	●	-	1M
411C-2208-ROHS	DPDT	DC-18GHz	Failsafe	12VDC	SMA	-	-	-	1M
411C-420832A-ROHS	DPDT	DC-18GHz	Latching	12VDC	SMA	●	●	●	1M
412-2201-ROHS	DPDT	DC-12.4GHz	Failsafe	12VDC	N	-	-	-	1M
412-2301-ROHS	DPDT	DC-12.4GHz	Failsafe	28VDC	N	-	-	-	1M
412-230132-ROHS	DPDT	DC-12.4GHz	Failsafe	28VDC	N	-	●	-	1M
565-5208-ROHS	SP6T	DC-18GHz	N.O.	12VDC	SMA	-	-	-	2M
565-5308-ROHS	SP6T	DC-18GHz	N.O.	28VDC	SMA	-	-	-	2M
565Y-5311-ROHS	SP6T	DC-40GHz	N.O.	28VDC	2.92 mm	-	-	-	1M

N.O. = Normally Open Actuator

\* Next Day shipping pending stock availability



**DowKey<sup>®</sup> Microwave**  
CORPORATION

A **DOVER** COMPANY

4822 McGrath Street | Ventura, CA 93003  
Tel 805.650.0260 | Fax 805.650.1734 | [www.dowkey.com](http://www.dowkey.com)

